



# The 4th Workshop of Asian Young Geographers

*Geography of Asia under Global Change*

## Program Book

November 29th - December 2nd, 2024

Yuxi, China

Young Geographer Working Group of Asian Geographical Association (AGA-YGWWG)

Working Committee for Young Geographer of the Geographical Society of China (GSC-WCYG)

Young Scientist Innovation Network of the International Society for Digital Earth (ISDE-YSIN)

Yuxi Normal University

IGU Commission for Young and Early Career Geographers (IGU-YECG)

## Content

Content.....	1
Workshop Introduction.....	1
Venue.....	2
Registration and Payment.....	4
Overall Schedule.....	5
Transport.....	6
Keynote Speakers.....	8
Parallel Sessions.....	23
Field Trips.....	37
Young Geographer Working Group of Asian Geographical Association (AGA-YGWG).....	38
The Working Committee for Young Geographers of Geographical Society of China (GSC-WCYG).....	40
The Young Scientist Innovation Network of International Society for Digital Earth (ISDE-YSIN).....	41
Yuxi Normal University.....	42
The IGU Commission for Young and Early Careers Geographers (IGU-YECCG)....	45
Organizers.....	47
Academic Committee.....	48
Organizing Committee.....	49
Contact Us.....	50
Volunteers.....	51

## Workshop Introduction

As global climate change and environmental challenge become increasingly severe, Asia, the most populous and geographically diverse continent in the world, is facing unprecedented challenges in its geographical characteristics and evolutionary trends. The natural geographical landscape, ecological environment, and socio-economic development of Asia are all deeply influenced by global change. These changes not only concern the well-being of the people in Asian countries but also have profound impacts on global sustainable development.

Co-organized by Young Geographer Working Group of Asian Geographical Association (AGA-YGWG) and Yuxi Normal University, the 4<sup>th</sup> Workshop of Asian Young Geographers will be held during November 29<sup>th</sup>-December 2<sup>nd</sup> 2024 in Yuxi City, Yunnan Province, China. The upcoming workshop themed “**Geography of Asia under Global Change**” will delve into the impacts of global change on Asia's physical geography, human geography, geographical science and environment science. The workshop will gather young scholars from various fields of geography to share research outcomes and experiences, providing scientific references and policy support for Asia and the world to explore coping strategies and sustainable development paths aiming at addressing global change challenges.

Young researchers, scholars and graduate students in global geography and related disciplines are welcome to participate and present their cutting-edge research outcomes.

## Venue

Opening Ceremony: **Yuxi Normal University**

Website: <https://www.yxnu.edu.cn>

Address: No. 134, Fenghuang Road, Hongta District, Yuxi City, Yunnan Province, China.



Parallel sessions and closing ceremony: **Zhongyu Hotel**

Address: No. 62 Nie'er Road, Hongta District, Yuxi City, Yunnan Province, China



## Registration and Payment

Type	Registration fee
Participant	¥1500 CNY
Student	¥1000 CNY

**Note:** Registration fees listed above include conference materials, welcome reception, lunches on Nov. 30 and Dec. 1 and coffee breaks during the workshop.

Accommodation is not included. Field trip is not included.

For Chinese participants, please register for the conference and pay the registration fee through the conference website.

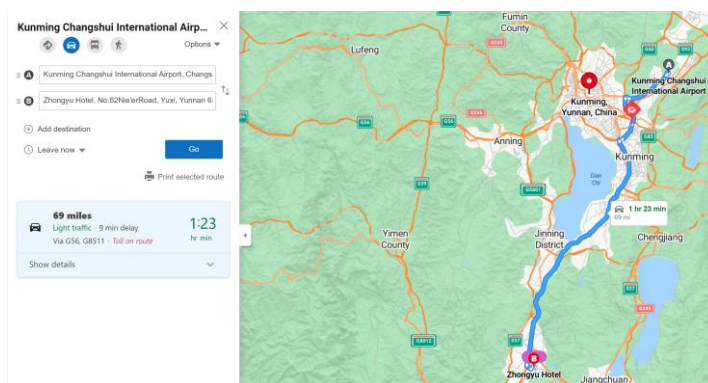
For international participants, please register and submit abstract/paper through the conference website (<http://39.98.210.144:8080/AGAYGWG/>) and pay the registration fee by cash on site (Only CNY accepted) on November 29, 2024.

## Overall Schedule

Date	Time	Content	Location
11.29	08:00-18:00	Registration	Lobby, 1st floor, Zhongyu Hotel
11.30	08:30-9:00	Opening Ceremony	Conference Hall, 3rd Floor, Library, Yuxi Normal University
	09:00-09:10	Group Photo	In front of the library, Yuxi Normal University
	09:10-09:30	Coffee Break	Lobby, 3rd Floor, Library
	09:30-12:30	Keynotes	Conference Hall, 3rd Floor, Library, Yuxi Normal University
	12:30-14:00	Lunch	Zhongyu Hotel
	14:00-18:00	Parallel Sessions	
	18:30-20:00	Welcome Reception	Zhongyu Hotel
	12.01	9:00-12:00	Parallel Sessions
12:00-14:00		Lunch	
14:00-16:30		Parallel Sessions	
16:30-17:00		Closing Ceremony	
12.02	09:00-16:00	Field Trip	Chengjiang City

## Transport

- From Kunming Changshui Airport, you can take the airport bus “Bus Kong Gang Yu Xi Special Line(空港玉溪专线)” to Yuxi Bus Station “Ming Zhu Lu Cheng Shi Hou Ji Ting(明珠路城市候机厅)”, which takes about 1.5 hours and costs approximately 70 CNY. Airport bus starts to run from 8:30 till 21:30, departs every 40 minutes. Then, you can take a taxi from Yuxi Bus Station to Yuxi Zhongyu Hotel(中玉酒店), which costs about 10 CNY. Or you can take a taxi to Yuxi Zhongyu Hotel(中玉酒店), which costs about 350 CNY.



Bus: Bus Kong Gang Yu Xi Special Line(空港玉溪专线) - Kun Ming Chang Shui International Airport Stop(昆明长水国际机场)  
 Depart from Kun Ming Chang Shui International Airport Stop(昆明长水国际机场)

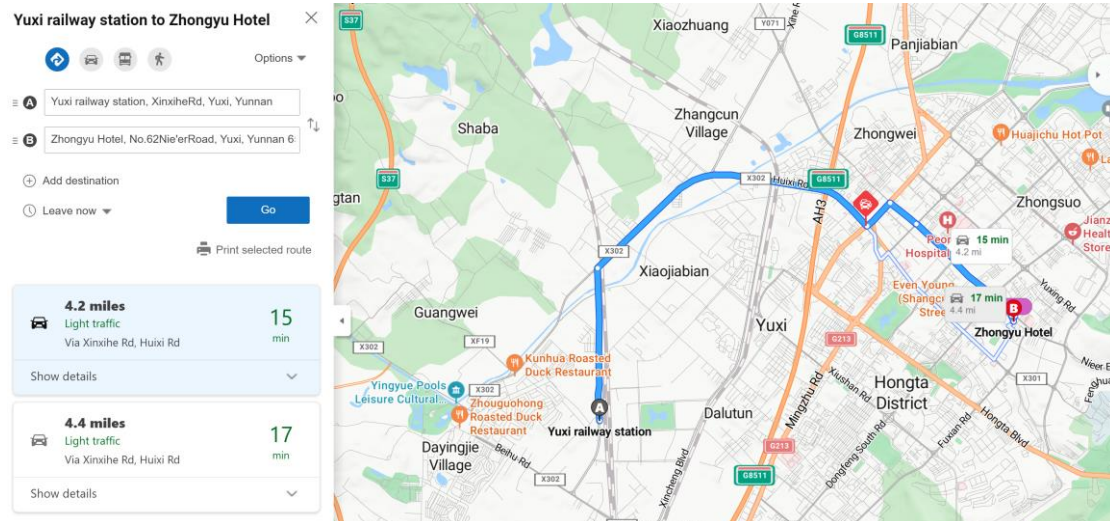
Kun Ming Chang Shui International Airport Stop(昆明长水国际机场)

Ming Zhu Lu Cheng Shi Hou Ji Ting Stop(明珠路城市候机厅)

Arrive at Ming Zhu Lu Cheng Shi Hou Ji Ting Stop(明珠路城市候机厅)



- From Kunming Railway Station or Kunming South Railway Station, you can take a train to Yuxi Railway Station, which takes about 30 minutes and costs approximately 40 CNY. Then, you can take a taxi from Yuxi Railway Station to Zhongyu Hotel, which takes about 20 minutes and costs around 15 CNY.



## Keynote Speakers

*Prof. Lai Vinh CAM*

Vice President of the Vietnam Geographical Association

Vice President, Asian Geographical Association



Prof. **Lai Vinh CAM** (1956), received an engineering degree from Hanoi University of Geography (1978) and a doctorate in geographical sciences from Warsaw University (1999). After graduating from university, he returned to work at Vietnam Academy of Science and Technology from 1978 to present. His intensive research areas including:

- Landscape and physical geography

- Planning and territorial organization,
- Soil erosion and natural disasters.

He is co-authors of 7 books and more than 100 papers. During his work, he was elected as Director of the Institute of Geography, Chairman of the Institute's scientific council. Currently, he was elected Vice President of the Vietnam Geographical Association and Vice President of the Asian Geographical Association.

*Prof. Michael MEADOWS*

Professor, Nanjing University

Past President of the International Geographical Union



**Michael MEADOWS**, Past President of the International Geographical Union, is currently Professor in the School of Geography and Ocean Sciences at Nanjing University, China, but retains a research position in the Department of Environmental and Geographical Science at the University of Cape Town, where he was Head of Department from 2001-2017. Meadows has authored or co-authored more than 300 peer-reviewed research articles and has recently co-edited two major review volumes: *Research Directions, Challenges and Achievements of Modern Geography* (Springer, 2023) and *Geography of the Anthropocene* (Istanbul University Press, 2024). Meadows' research interests lie broadly in the field of physical geography and more specifically concern environmental change and the geomorphological and ecological impacts of recent natural and human-induced changes. Meadows is an elected Fellow of the Royal Geographical Society, the Society of South African Geographers, the Royal Society of South Africa, the African Academy of Science, *Academia Europaea* and of the University of Cape Town. He was elected recently as Fellow of the Geographical Society of China, Fellow of the International Science Council, and Honorary Fellow of the Royal Scottish Geographical Society. He is recipient of the 2024 Royal Society of South Africa Marloth Medal for “highly distinguished, multidisciplinary contributions to the furtherance of science”.

*Prof. Fahu CHEN*

Academician, Chinese Academy of Sciences, China

President, Geographical society of China

Professor, Institute of Tibetan Plateau Research, CAS

**Title: Spatial heterogeneity and “Mega-sandwich Pattern” of Interdecadal rainfall Variations and its influence in the Asian Summer Precipitation Region**



**Fahu CHEN** is CAS Academician elected in 2015, The Member of the World Academy of Sciences (TWAS ) elected in 2016, a research professor of Institute of Tibetan Plateau Research, Chinese Academy of Sciences (CAS). He is president (2019-2024) and fellow of Geographical Society of China, and associate Chairman of Environment Evolution Commission of IGU since 2012. Prof. Chen was a professor for physical geography and Quaternary Science in Lanzhou University during 1994-2018, and director of key Laboratory of West China's Environmental System (Ministry of Education of China) during 2005-2016, and director of Institute of Tibetan Plateau Research during 2018-2023. He was chairman of Rapid Climatic Changes in the Central-Asia's Dryland under INQUA (INQUA RACHAD Working Group, 1999-2007), and now is vice presidents of China Society on Tibetan Plateau, and China Quaternary Research Associate.

His scientific work involves Quaternary environmental changes (especial during Holocene), climate changes, environmental archeology, loess record, desert evolution and paleolimnology with special focus on paleoenvironmental reconstruction, past human-environment interactions in Arid Central Asia and the Tibetan Plateau. His main scientific contributions include three aspects: 1) Promoted researches on East Asian summer monsoon and loess-dust in China during the late Quaternary, 2) Pioneering the study of the “westerlies-dominated climatic regime” of climate change in the arid central Asia drylands, 3) Proposed a new perspective on human occupation history and

high-altitude adaptation on the Tibet Plateau.

He has published more than 710 papers in peer-reviewed journals of both English and Chinese with more than 440 papers published in SCI journals such as Nature, Science, NCC, NG, NS, NC, Sci. Bull., PNAS, ESR, QSR, which are cited more than 22700 times by papers of SCI journals with H index of 74, and carried on numerous projects from China National Natural Science Foundation, Ministry of Science and Technology, Chinese Academy of Science, and Ministry of Education. Most of them are involved by international research groups. Currently, he is Executive Editors-In-Chief of Science Bulletin, Editors-In-Chief of Scientia Geographica Sinica, associate editors of Fundamental Research, Frontier of Earth Science, and editors of Journal of Quaternary Science, Palaeogeography, Palaeoclimatology, Palaeoecology, Anthropocene, Geography and Sustainability, One Earth and some associate editors and editors of journals in Chinese.

*Prof. Maria PARADISO*

Professor, University of Naples Federico II, Italy

Vice President, International Geographical Union

**Title: Are you a geographer? Find your place in Geography!**



International Science Council (ISC) Ordinary Member of the Governing Board 2021-2024, International Geographical Union, Vice President 2022-2024.

**Maria Paradiso** is Professor of Political and Economic Geography, University of Naples Federico II. Currently she is International Science Council ISC, Governors Board and Vice President of the International Geographical Union, IGU. Fellow of Academia Europaea (London), she lead first the Social Sciences Section and then the “Mobility, Governance, Environment, Space” Section. Paradiso has been founder and Chair of the International Geographical Union (IGU) Commission “Mediterranean Basin”, the first Commission with a regional focus in IGU.

She has served as Vice Chair of the IGU Commission “Geography of Information Society” till 2012 and has been contributing since 2001 to the development nationally and internationally of this new field of research in Geography with an interdisciplinary perspective. She has been Primary Coordinator of FP7 People Marie Curie IRSES MEDCHANGE – Euromediterranean changing relationships 612639, a research and mobility Euromediterranean partnerships with 9 Universities from Europe, North Africa, Middle East.

Maria received teaching, conference, and research invitations by several Universities and Academies from all over the world such as the University of Bordeaux Montaigne, Lexington University, Sorbonne Paris, University of Toulouse, Le Havre, the National University of Seoul, University of Tokyo and Waseda, University of Ankara, Istanbul, Hassan II Mohammed Casablanca, Cadi Ayyad Marrakesh, CERES Tunis, Israeli Academy of Science and University of Cape Town, Nanjing School of

Marine Geography and Ocean sciences. She got sponsorships by many international and national scientific and granting bodies.

Her main interest in last decades has been the exploration of changes in the Mediterranean relationships through narratives of people in mobilities across the Mediterranean and the better understanding of cultural dialogue and human development. Recently she started cooperation and new endeavours in Marine studies (oceans and seas as social spaces) and continues scientific activities in exploring human life in the Internet Age. Maria is interested in cooperation for developing methodologies and practices for Science commitment towards more equitable societies across the Globe.

**Mr. Paco ACEDO**

Explorer, Documentary Maker, Spain Member, Sociedad Geográfica Española

**Title: Writing Your Own History: Curiosity as the Only Reason to Explore**



**Paco Acedo**, Born in Córdoba, Spain

Explorer specialist in ice diving.

From an early age, his childhood was linked to the seabed and the sea. Paco has known how to combine his four great passions in a peculiar way: diving, adventure, nature and music.

For years he combined his career as a professional musician with his desire to explore and learn about remote places and cultures, having his first contact with extreme environments in the deep Sahara desert as a teenager, a trip that would change his perception of the planet and its inhabitants.

His career as a professional musician took him to live in New York, where he experienced the attack on the Twin Towers in 2001 very closely, an experience that left a deep mark on him and after which he decided to reorient his life towards what made him feel truly alive. After working as a teacher, he decided to leave everything and combine his work as a diving instructor with exploration, adventure and what he himself defines as “adventure diving”.

Years of experience and an extensive curriculum in expeditions support his ability to carry out projects in which the underwater world, the polar regions or the most isolated tribes are combined in unprecedented expeditions.

Projects related to diving and exploration have taken Paco to remote places around the world, also completing in 2010 the first “Underwater Trip Around the World”.

In 2012 he completed the project “Witnesses of the Thaw”, again a solo adventure travelling and exploring the seabeds of Greenland, Siberia and Svalbard, from which emerged the documentary in which he showed the reality of the last inhabitants of the Arctic in the face of melting ice and global warming. Shortly afterwards he would go to live with the last Eskimos in northern Greenland, to dive under the ice in regions



where it had never been done before.

The publication of two books and a multitude of challenges and projects complete his career, such as the Subpolar 90° project or the skiing and diving crossing of the Baltic Sea or Lake Baikal, in Siberia. In 2014 he was chosen by the Discovery Max channel as the winner of the “Born To Be Discovery” . In the same year Paco was named international ambassador of HOLLIS, the most recognised brand of technical diving equipment, testing and researching together in the development of new materials for ice diving.

In 2016 he began his career as a collaborator in the prestigious television programme CUARTO MILENIO, where through his reports he delves into the mythology and mysteries surrounding the underwater world, the polar regions or the most isolated cultures and tribes on the planet.

Communicator, speaker, writer, documentary producer, professional diving instructor, ambassador of values and brands. Paco decided to risk everything to feel alive around his great passion, currently devoting himself to the development of new projects and the exploration of the most remote regions of the planet.

*Prof. Antonio PAEZ*

Professor, McMaster University, Canada

Editors-in-Chief, Journal of Geographical System

**Title: Opening Geographical Sciences**



Dr. **Antonio PAEZ** holds degrees from Instituto Tecnológico de Monterrey (Mexico), and Tohoku University (Japan). He has dedicated his career to the study of transportation and society. Perhaps fittingly, given his background in engineering, Dr. Páez's career launched with an interest in methodological issues in the analysis of transportation systems. Over time his research has grown to offer a more encompassing perspective of transportation, including how mobility and accessibility facilitate social inclusion. For the past 15 years, Dr. Páez has been at the forefront of scholarly research on the role of transportation in promoting more equitable and just societies.

Over the course of his career, Dr. Páez has contributed to more than 150 publications in peer-reviewed scholarly journals, has co-edited three books on spatial analysis, health, and transportation, and is author of *Discrete Choice Analysis with R*, published in Springer's flagship series UseR!

Dr. Páez led a project that examined social exclusion and transportation in Canadian communities; this project won the 2010 Meredith F. Burrill Award of the Association of American Geographers for work of excellent merit at the interface of geography and policy. More recently, Dr. Páez is the 2024 recipient of the Edward L. Ullman Award of the Association of American Geographers for his lifelong commitment and contributions to the field of transportation geography.

Dr. Páez has traveled widely and has been invited to lecture and teach in Australia, Austria, Brazil, Chile, China, Germany, Greece, Italy, Mexico, the Netherlands, Spain, Switzerland, and the United States. He has been a member of more than 10 editorial boards and is co-Editor-in-Chief of *Journal of Geographical Systems* since 2008.

***Dr. Prabuddh Kumar MISHRA***

Assistant Professor, Shivaji College, University of Delhi, India

Joint Secretary, National Association of Geographers, India

**Title: Multiple Perspectives of Natural Resource Conservation in the Himalayan Region**



**Prabuddh MISHRA**

Joint Secretary, National Association of Geographers, India (NAGI)

Advisor, Center for Himalayan Studies, University of Delhi, India

**Dr. Prabuddh Kumar MISHRA**, with his unwavering dedication and scholarly prowess, has significantly enriched the academic landscape at Shivaji College, University of Delhi. His contributions span both within and beyond the confines of the institution. He holds a comprehensive academic background, comprising an MA, M.Phil, and a Doctorate in Geography, from University of Delhi. Dr. Mishra's research endeavors span a diverse array of domains including Indian Knowledge System, Natural Resource Management, Mountain Studies, Disaster Management, Sustainability, Human and Institutional Capacity Development, and Livelihood-related issues.

His passion for geography is infectious, igniting a curiosity for the world's complexities within his students. Through his engaging lectures, innovative teaching methodologies, and mentorship, he has inspired a new generation of geographers. He is also serving as Convener, College Research and Innovation Cell and Co-ordinator of Centre for Environment and Disaster Management at Shivaji College. Dr. Mishra is also serving as core committee member of IQAC of the College and previously discharged his duties as Teacher in Charge, Convener-Placement Cell and SPADE. He was also active member of many committees of the college.

His scholarly contributions are notable, boasting 32 research publication in esteemed International SCI/Scopus Indexed Scientific journals, 08 Research papers in UGC Care journal, 07 chapters in edited volumes along with the authorship of 5 books.

His H Index is 14 and 12 for Google and Scopus database respectively. Beyond academia, Dr. Mishra completed 01 project of ICSSR as Principal Investigator (PI). He is also supervising 04 PhD students and 01 M.Phil is already awarded his supervision. He is author of Books at NCERT, Bhartiya Shiksha Board, and also developed curriculum and syllabus at University of Delhi and Regional Institute of Education, NCERT, Bhopal.

Currently holding the position of Joint Secretary at the National Association of Geographers, India (NAGI) the largest association/body of Geography in India. Furthermore, Dr. Mishra serves as a respected Member of the Editorial Board and Review Committee member/reviewer for numerous esteemed International Journals, including Elsevier, Springer, Wileys, Sage, Oxford, Taylor and Fransis, MDPI, Frontier, PlosOne, Cell Press underscoring his commitment to advancing scholarly discourse and academic rigor.

*Prof. Guanpeng DONG*

Professor, Henan University, China

Deputy Director, Key Research Institute of Yellow River Civilization and Sustainable Development

**Title: Spatially Explicit Climate Econometric Mode**



**Guanpeng DONG**, from Xuchang, Henan Province, holds a Ph.D. from the University of Bristol. He is a professor at Henan University and the deputy director of the Yellow River Civilization and Sustainable Development Research Center. He has led the National Overseas High-Level Talent Youth Program and both general and youth projects of the National Natural Science Foundation of China. He is a member of the Geographical Modeling and Geographical Information Analysis Committee, the Urban and Regional Management Committee, and the Behavioral Geography Committee of the Geographical Society of China. He serves as an editorial board member of *Geographical Science* and is the associate editor of the SSCI journal “*Applied Spatial Analysis and Policy*” in the field of international geographical modeling and analysis. In 2016, he received the Jon Rasbash Memorial Prize for Quantitative Social Science awarded by the Economic and Social Research Council (ESRC) of the United Kingdom. In 2024, he was awarded the Young Geographer Award by the International Geographical Union (IGU). He has long been engaged in the innovation of multi-scale spatio-temporal statistical modeling methods, global climate change, and sustainable development research. He has developed spatial multi-scale statistical modeling methods and software platforms and has published over 70 papers in leading international geography journals such as *AAAG*, *GA*, and *IJGI*.

***Dr. Gaurav SIKKA***

Assistant Professor, Postgraduate Department of Geography, A.N. College,  
Patliputra University, Patna (India)

Chair, International Geographical Union (IGU) Commission for Young & Early Career  
Geographers

**Title: Youth for Sustainable Action in Bihar Synergising-IGU-YECG and AGA-  
YGGW**

Dr. **Gaurav SIKKA**, Chair of the International Geographical Union Commission for



Young and Early Career Geographers (IGU-YECG) is presently  
working as an Assistant Professor at the Postgraduate Department of  
Geography, A.N. College, Patliputra University, Patna, Bihar (India).

He holds a Ph.D. in human geography from Delhi School of Economics,  
University of Delhi. His research interests revolve around social

geography, geography of gender, sustainability, policy research and development-  
induced displacement, resettlement and rehabilitation. He has published in journals of  
international repute like: Gender, Place and Culture; SAGE Journal of Land and Rural  
Studies; GeoJournal; Geography, Environment, Sustainability; AMBIO etc. He has  
experience working on international collaborative projects funded by Urban Studies  
Foundation (USF) and Norwegian University of Science and Technology. Dr. Sikka was  
the Secretary and Treasurer of the international Geographical Union (IGU) Taskforce  
for Young and Early Career Geographers from 2017 to 2024. He was also on the  
committee of the Royal Geographical Society Gender & Feminist Geographies  
Research Group from 2016-2022. He has received a Junior Research Fellowship by the  
University Grants Commission to pursue PhD research.

<b>Conference Hall, 3rd Floor, Library, Yuxi Normal University</b>		
<b>Opening &amp; Keynotes</b>		
<b>Time</b>	<b>Content</b>	
8:10	The shuttle bus departs from the entrance of Yuxi Zhongyu Hotel to Yuxi Normal University.	
8:30-9:00	<b>Opening Ceremony</b>	
	<b>Chair: Prof. Min CHEN</b> Chair of AGA-YGWG	
	<b>Prof. Hongyun DUAN</b> President, Yuxi Normal University	
	<b>Prof. Lai Vinh CAM</b> Vice President, Asian Geographical Association	
	<b>Prof. Michael MEADOWS</b> Past President, International Geographical Union	
<b>Welcome Speeches</b>	<b>Prof. Fahu CHEN</b> President, Geographical Society of China	
09:00-09:10	<b>Group Photo</b> (In front of the library)	
09:10-09:30	<b>Coffee Break</b> (Lobby, 3rd Floor, Library)	
09:30-10:00	<b>Chair: Dr. Gaurav SIKKA</b> Chair of International Geographical Union Commission for Young & Early Career Geographers	
	<b>Invited Speaker</b>	<b>Title</b>
	<b>Prof. Fahu CHEN</b> Academician, Chinese Academy of Sciences Professor, Institute of Tibetan Plateau Research, CAS, China	Spatial heterogeneity and “Mega-sandwich Pattern” of Interdecadal rainfall Variations and its influence in the Asian Summer Precipitation Region
10:00-10:30	<b>Prof. Maria PARADISO</b> University of Naples Federico II, Italy Vice President, International Geographical Union	Are You a Geographer? Find Your Place in Geography!
10:30-11:00	<b>Mr. Paco ACEDO</b> Explorer, Documentary Maker, Spain Member, Sociedad Geográfica Española	Writing Your Own History: Curiosity as the Only Reason to Explore

<p style="text-align: center;"><b>Chair: Dr. Li HE</b> Secretary of AGA-YGWG</p>		
11:00-11:30	<p style="text-align: center;"><b>Prof. Antonio PAEZ</b> McMaster University, Canada Editors-in-Chief, Journal of Geographical System</p>	Opening Geographical Sciences
11:30-12:00	<p style="text-align: center;"><b>Dr. Prabuddh Kumar MISHRA</b> Assistant Professor, University of Delhi Joint Secretary, National Association of Geographers, India</p>	Multiple Perspectives of Natural Resource Conservation in the Himalayan Region
12:00-12:30	<p style="text-align: center;"><b>Prof. Guanpeng DONG</b> Henan University, China Deputy Director, Key Research Institute of Yellow River Civilization and Sustainable Development</p>	Spatially Explicit Climate Econometric Mode
12: 40	The shuttle bus departs from Yuxi Normal University to Yuxi Zhongyu Hotel.	



**Parallel Sessions**

**Conference hall, 2<sup>nd</sup> floor, Zhongyu Hotel**

**Session 1: Optimization of Territorial Space Patterns and Functional Improvement**

**Session Chair: Prof. Shaoyao ZHANG, Prof. Ligang LU, Prof. Jing LIU, Dr. Junxiao WANG**

<b>Time</b>	<b>Author</b>	<b>Paper Title</b>
14:00-14:15	<b>Li PENG</b> Sichuan Normal University	Understanding vegetation restoration in the southwest China Karst under ecological engineering: from a social-ecological perspective
14:15-14:30	<b>Zhi CAO</b> Institute of Geographic Sciences and Natural Resources Research, CAS	Multi-scale detection and optimization strategies of land use patterns in the Loess Plateau
14:30-14:45	<b>Li MA</b> Chongqing University	Reshaping the plateau of ecosystem services value of farmland: practice and exploration of high-standard farmland construction in China
14:45-15:00	<b>Haochen YU</b> Qingdao University of Science and Technology	Integrated protection and restoration for full-array ecosystems in dryland: A land degradation neutrality perspective
15:00-15:15	<b>Bo HAN</b> Nanjing University	Satellite observations reveal the unsustainability of recent spatial patterns in China's cropland productivity dynamics
15:15-15:30	<b>Huaxiang CHEN</b> Third Institute of Oceanography, Ministry of Natural Resources	Construction of a blue-green ecological network in the Luoyuan Bay Area in Southeast China via the identification of important habitats
15:30-15:45	<b>Kai LI</b> Sichuan Agricultural University	Identifying the potential areas of afforestation projects using cost-benefit analysis based on ecosystem services and farmland suitability
15:45-16:00	<b>Guibin ZHENG</b> Guangzhou University	Land use optimization and carbon storage assessment in Guangzhou for carbon neutrality
16:00-16:15	<b>Tea/Coffee Break</b>	

16:15-16:30	<b>Hongping ZENG</b> Guangzhou University	Accurate identification and trade-off analysis of multifunctional spaces of land in megacities: A case study of Guangzhou city, China
16:30-16:45	<b>Fangliang WAN</b> Ocean University of China	Evolutionary trajectory, spatial pattern, and goal transformation of human settlements environment policies in China's urban agglomerations
16:45-17:00	<b>Siqi WANG</b> Yunnan University	Integrating MESI and circuit theory models to construct ecological security pattern in the China-Myanmar border region
17:00-17:15	<b>Haoshen YANG</b> Nanjing University of Finance & Economics	The economic implications of green spaces on housing prices: new evidence from visual access data
17:15-17:30	<b>Jiahao FANG</b> Sichuan Normal University	A continuous gradient landscape dataset of urban-suburban-rural-natural areas in Southwest China, 1986-2021
17:30-17:45	<b>Xiwei LAI</b> Nanjing University of Finance & Economics	Research on the evolution of multi-functional trade-off and synergy of cultivated land and its response to cultivated land use transition in Jiangsu Province
17:45-18:00	<b>Min WANG</b> China University of Geosciences (Wuhan)	How do the cropland resources change in the Yangtze River Economic Belt?
18:00-18:15	<b>Ayesha RIAZ</b> Vietnam National University	Optimizing polio vaccination strategies in Lahore: GIS-based route planning for improved coverage in Nishtar Town
18:15-18:30	<b>Zeyu WANG, Huan SONG</b> Liaoning Normal University	Driver Spatio-temporal Differentiation, Convergence, and Policy Recommendations of China's Marine Economic Growth

**Room 402, Zhongyu Hotel****Session 6: Urban Landscape Sustainability in Asia**

**Session Chairs:** Prof. Qian CAO, Prof. Zhifeng LIU, Prof. Da ZHANG, Prof. Yupeng LIU,  
Prof. Cheng LI

<b>Time</b>	<b>Author</b>	<b>Paper Title</b>
14:00-14:15	<b>Yunbo LU</b> Sun Yat-sen University	Evaluation of high spatio-temporal resolution solar radiation simulation based on the WRF-Solar model
14:15-14:30	<b>Lei AN</b> Henan University of Economics and Law	Research on the inheritance path of traditional Chinese architectural construction skills in the context of urban renewal
14:30-14:45	<b>Mingxin CHEN</b> Chengdu University of Technology	Freedom or shackles? A multidisciplinary examination and reflection on digital nomads
14:45-15:00	<b>Binghua GONG</b> Beijing Normal University	Delimiting urban growth boundaries for oases by incorporating the protection of ecosystem services and modes of urban expansion: A case study of China's drylands
15:00-15:15	<b>Pengchao ZHANG</b> Henan University of Economics and Law	Research on the protection and sustainable development and utilization of ancient buildings in ancient capitals of China and South Korea
15:15-15:30	<b>Lisheng LIU</b> Chongqing Jiaotong University	Constructing a dynamic model for multi-scenario simulation of water security under different SSPs-RCPs
15:30-15:45	<b>Qiaoxian BAI</b> Beijing Normal University	Delineation of future urban growth boundaries on the Qinghai-Xizang Plateau by integrating socioeconomic development and ecosystem services conservation
15:45-16:00	<b>Mengtian HAN</b> China University of Geosciences	Impact of Urban Regeneration on the Summer Thermal Environment in Wuhan
16:00-16:15	<b>Tea/Coffee Break</b>	

16:15-16:30	<b>Cheng LI</b> Guangdong Academy of Sciences	Urban woodlands as natural filters: Intercepting lead and mercury from rainfall
16:30-16:45	<b>Qian CAO</b> China University of Geosciences	Driving factors and exposure risks of urban floods in Wuhan: A multi-scale perspective
16:45-17:00	<b>Yichen YAO</b> Ochanomizu University	Perceiving the domestic space through breastfeeding women's bodily experience: A case study of Beijing and Tianjin, China
17:00-17:15	<b>Xuecheng FU</b> Chongqing University	Uncertainties of urban heat island estimation with diverse reference delineation methods based on urban-rural division and local climate zone
17:15-17:30	<b>Shi CHEN</b> Chongqing Jiaotong University	Quantification and classification of supply-flow-demand in the water supply services
17:30-17:45	<b>Fangmei LIU</b> Shaanxi Normal University	Nonlinear effect of urban built environment on surface urban heat island: A case study in Xi'an

<b>Room 401, Zhongyu Hotel</b>		
<b>Workshop on Spatial Availability &amp; Editors Session</b>		
<b>Session Chairs: Prof. Antonio PAEZ, Editors</b>		
<b>Time</b>	<b>Chair</b>	<b>Theme</b>
14:00-16:00	<b>Prof. Antonio PAEZ</b> McMaster University, Canada	Spatial availability workshop
16:00-16:15	<b>Tea/Coffee Break</b>	
16:15-18:00	Editors Session	
	Editor	Journal
	Min CHEN	Environmental Modelling & Software
	Antonio PAEZ	Journal of Geographical Systems
	Shujuan ZHANG, Xiaozui WANG	Geo-spatial Information Science
	Guanpeng DONG	Applied Spatial Analysis and Policy
	Min CHEN	Annals of GIS
	Haoran CHU	Information Geography

Conference hall, 2<sup>nd</sup> floor, Zhongyu Hotel

## Session 4: Land Use/Land Cover Change, Drivers, Consequences, and Policy Responses

Session Chairs: Dr. Shicheng Li, Prof. Prabuddh Mishra

<b>Time</b>	<b>Author</b>	<b>Paper Title</b>
9:00-9:15	<b>Yu BAI</b> Chang'an university	Tracing the agro-pastoral ecotone transition in northern China from the perspective of human-earth system
9:15-9:30	<b>Shicheng Li</b> China University of Geosciences (Wuhan)	Mapping cropping patterns in the North China Plain over the past 300 years and an analysis of the drivers of change
9:30-9:45	<b>Jiahui JI</b> Aerospace Information Research Institute, CAS	Remote sensing assessment of ecological risks of grassland degradation: A case study of Sanjiangyuan region
9:45-10:00	<b>Jiaming LI</b> Institute of Geographic Sciences and Natural Resources Research, CAS	Expansion of human activities and their ecological impacts in the Himalayas
10:00-10:15	<b>Tea/Coffee Break</b>	

Conference hall, 2<sup>nd</sup> floor, Zhongyu Hotel

## Session 8: Construction and Application of Geographic Intelligence (Large) Models

Session Chairs: Prof. Hou JIANG, Prof. Ling YAO, Prof. Fan ZHANG, Prof. Fangyu DING,  
Prof. Xin LU

10:15-10:30	<b>Hou JIANG</b> Institute of Geographic Sciences and Natural Resources Research, CAS	Construction and prospects of geo-intelligent Q&A system driven by large model
10:30-10:45	<b>Xin LU</b> Beijing Normal University	Mapping of utility-scale solar panel areas from 2000 to 2022 in China and regional application
10:45-11:00	<b>YanJun WANG</b> Hunan University of Science and Technolog	Intelligent identification technology of flood water body in Hunan province based on multi-source remote sensing data
11:00-11:15	<b>Ning SU</b> Beijing Normal University	Comprehensive assessment of the climatic and vegetation impacts of wind farms on grasslands: A case study in Inner Mongolia, China
11:15-11:30	<b>Hang ZHANG</b> Henan University	Developing a spatiotemporal neural econometric model to detect the economic impacts of global compound heatwaves and droughts
11:30-11:45	<b>Yang XU</b> Southwest Forestry University	The double-edged sword of large language models in education: expanding or widening the digital divide in underserved regions
11:45-12:00	<b>Tang LIU</b> Institute of Geographic Sciences and Natural Resources Research, CAS	Overlooked potential for enhanced carbon sequestration: densifying existing forests

**Room 201, Zhongyu Hotel****Session 12: Urban-rural Land Use Change and Ecological Well-being****Session Chairs: Prof. Yasi TIAN, Prof. Yuanyuan MAO**

<b>Time</b>	<b>Author</b>	<b>Paper Title</b>
9:00-9:15	<b>Xiaolin MEI</b> China Agricultural University	Research on China's rural cultural heritage based on CiteSpace: Dynamics, hotspots, and trends
9:15-9:30	<b>Yuqi ZHENG</b> Yunnan University	A study on land scale optimization through coordination of regional land benefit input-output: A case analysis of the central Yunnan urban agglomeration
9:30-9:45	<b>Deshang KONG</b> Huazhong University of Science & Technology	Influence of urban expansion patterns on land use efficiency: Mediating roles of agglomeration and industrial structure
9:45-10:00	<b>Chandra Shekhar DWIVEDI</b> The Central University of Jharkhand, India	Environmental impact analysis of agricultural residue burning (stubble) on the ambient air quality of the Indo-Gangetic Plain via remote sensing and geospatial techniques
10:00-10:15	<b>Tea/Coffee Break</b>	



## Room 201, Zhongyu Hotel

## Session 5: Land Management and Spatiotemporal Big Data Modeling

Session Chairs: Prof. Guanpeng DONG, Prof. Guilin LIU, Prof. Xufeng CUI, Prof. Guan LI,  
Dr. Isaac SARFO

10:45-11:00	<b>Peng ZHANG</b> Chang'an University	Block-scale modeling of residential land prices: Incorporating multilevel determinants and explainable artificial intelligence
11:00-11:15	<b>Xin XUAN</b> China University of Geosciences (Beijing)	A land-water-energy-greenhouse gas nexus framework informs climate change mitigation in agriculture
11:15-11:30	<b>Wenbo LU</b> Shaanxi Normal University	gdverse: An R package facilitating spatial stratified heterogeneity analysis with geographical detector models
11:30-11:45	<b>Yicheng LI</b> Guangzhou University	Innovative reconstruction and evaluation of forest refinement datasets by combining multi-source data: A case study of Guangdong Province

**Room 402, Zhongyu Hotel****Session 11: Innovative Perspectives to Risk Assessment and Response Strategies in Compound-Cascade Disasters: A Geographical Perspective****Session Chair:** Prof. Dongliang LUO, Prof. Qingping CHENG

<b>Time</b>	<b>Author</b>	<b>Paper Title</b>
9:00-9:15	<b>Yanfeng WU</b> Northeast Institute of Geography and Agroecology, CAS	Wetland mitigation functions on droughts: From drought characteristics to propagation of meteorological droughts to hydrological droughts
9:15-9:30	<b>Arvind Chandra PANDEY</b> Central University Jharkhand Ranchi, India	Supra glacier debris cover dynamics and lakes formation in Himalayan-Karakoram region: A geoinformatics based spatio-temporal assessment
9:30-9:45	<b>Lamin REN</b> Southwest Forestry University	Meteorological and hydrological drought characteristics at multiple timescales and their relationship with extreme climate indices for an endorheic river basin in northwestern China
9:45-10:00	<b>Yuanhe YU</b> Southwest Forestry University	Assessing the response of vegetation change to drought during 2009-2018 in Yunnan Province, China
10:00-10:15	<b>Zhipeng ZHANG</b> Henan University	China's AID alleviates the adverse impacts of extreme heat on economic inequality in Africa
10:15-10:30	<b>Tea/Coffee Break</b>	

## Room 402, Zhongyu Hotel

## Session 7: Energy Geography and Sustainable Development

Session Chair: Prof. Mengyao HAN

10:30-10:45	<b>Mengyao HAN</b> Institute of Geographic Sciences and Natural Resources Research, CAS	Deploying renewables: Trends, overlaps and impacts
10:45-11:00	<b>Qian ZHU</b> Jiangxi University of Finance and Economics	Spatial distribution characteristics of soil nutrients and fertility evaluation of cultivated land in Jinxian County
11:00-11:15	<b>Bifeng HU</b> Jiangxi University of Finance and Economics	Spatial distribution characteristics of soil bulk density in cultivated land in Poyang Lake Plain and its influencing factors
11:15-11:30	<b>Ao QING</b> Chinese Academy of Sciences	The trade-off between biodiversity conservation and the surge of wind power dispatch
11:30-11:45	<b>Wang XIN</b> Yunnan University	Analysis of USAID assistance pathways for water- related projects in the Lancang-Mekong River basin

**Room 201, Zhongyu Hotel****Session 9: Urban-rural Governance and Sustainable Development in the New Era****Session Chairs: Prof. Xianhui HOU, Dr. Jingming LIU, Dr. Dan ZHANG**

<b>Time</b>	<b>Author</b>	<b>Paper Title</b>
14:00-14:15	<b>Shuang LIN</b> Henan University of Economics and Law	Research on the urban renewal and improvement path of human settlement environment under the background of new urbanization in China
14:15-14:30	<b>Jingming LIU</b> Xi'an Jiaotong University	The spatial impact of transit-oriented development on residential differentiation via the extended node-place model
14:30-14:45	<b>Libang MA</b> Northwest Normal University	Characteristics and mechanisms of rural social space reconstruction: A case study of Qin'an County in Longzhong Loess Hilly Region
14:45-15:00	<b>Dan ZHANG</b> Xi'an Jiaotong University	Differential impacts of urban rail transit on residential prices: Across price segments and space
15:00-15:15	<b>Hongqing LI</b> Technical University of Berlin, German	Spatial accounting of nutrient balance and material cycling in agricultural parks from a geographic perspective
15:30-15:45	<b>Chuanyang PAN</b> China Agricultural University	Income evolution in rural China: Patterns, inequalities and drivers
15:45-16:00	<b>Chunlin BIAN</b> Tongji University	AgriVerse for rural revitalization and strengthening community resilience: Case studies in Liangshan, Southwest China
16:15-16:30	<b>Qiyi LIAN</b> Xiamen University	A review and prospect of digitalized planning of historical districts from a resilience perspective

Conference Hall, 3<sup>rd</sup> Floor, Zhongyu Hotel

## Session 10: Geographic Simulation and Optimization Column

Session Chair: Prof. Shaohua WANG

<b>Time</b>	<b>Author</b>	<b>Paper Title</b>
14:00-14:15	<b>Shaohua WANG</b> Aerospace Information Research Institute, CAS.	<b>Leveraging deep reinforcement learning to solve geospatial optimization problems</b>
14:15-14:30	<b>Min XU</b> Aerospace Information Research Institute, CAS.	<b>Dynamic Monitoring and Simulation of Regional Planted Forest Resources based on Remote Sensing</b>
14:30-14:45	<b>Li WEI</b> Hebei GEO University	Canopy transpiration, stomatal conductance dynamics and spatial distribution of optimal plant cover for typical plantation on the Bashang Plateau, China
14:45-15:00	<b>Xin HU</b> Yunnan University	The effects of dispersal limitation on soil microbial diversity and the assessment of null model algorithms
15:00-15:15	<b>Ziting SHAO</b> Guangzhou University	Modeling subtropical forest changes under climate change and close-to-nature silviculture: Is there a tipping point in an uncertain future in Southern China?
15:15-15:30	<b>Zhuo SUN</b> Nanjing Normal University	Exploring geographic modal and its practical framework for supporting geographic integration
15:30-15:45	<b>Subhash SINGH</b> Banaras Hindu University, India	Air temperature trends and elevation-dependent warming patterns in the Nepal Himalaya
15:45-16:00	<b>Jyoti KARKI</b> Yunnan University	Groundwater potential assessment using an integrated AHP-driven geospatial technique in Narayani River basin, Nepal

**Conference Hall, 3<sup>rd</sup> Floor, Zhongyu Hotel**

**Closing Ceremony**

**Chair: Dr. Li HE**

<b>Time</b>	<b>Speaker/Presenter</b>	<b>Content</b>
16:30-17:00	Dr. Gaurav SIKKA Chair of International Geographical Union Commission for Young & Early Career Geographers	Youth for Sustainable Action in Bihar Synergising-IGU-YECCG and AGA-YGWWG
17:00-17:10	Prof. Min CHEN	Summary Report
17:10-17:20	Prof. Lai Vinh CAM Prof. Michael MEADOWS	Best Paper Award Ceremony
17:20-17:30	Awardees	Acceptance Speeches

## Field Trips

A field trip to Fuxian Lake, Chengjiang County, Yuxi City is planned after the workshop. The expense for this field trip is 350 CNY per person, not included in the registration fee. Please sign up for the field trip when check-in at the reception table. The final decision on whether it will take place depends on the number of participants. If fewer than 15 people sign up, the event will be canceled.



## **Young Geographer Working Group of Asian Geographical Association (AGA-YGWWG)**

The Asian Geographical Association (AGA) is an international, non-governmental, non-political and non-profit scientific organization, whose principal objectives are to stimulate the development of geography in Asia, to advance research and educational activities in all fields of geography in Asia, to promote the dissemination of knowledge of geography in education, business and governmental organizations across Asia and to improve communication and facilitate cooperation among institutions in member countries. The AGA was formally established in Guangzhou, China at the 4th Asian Conference on Geography in 2018, in order to promote development of geography in Asia. The AGA fulfils its aims through establishment of working groups, organizations of international conferences (Asian Conference on Geography, abbreviated to ACG), publication of academic and educational activities and information exchanges. Membership of the AGA is normally by countries and regions. At present, 24 countries and regions of Asia are affiliated to the AGA through their national member societies. The activities of the AGA are steered by its Council and its Executive Committee.

Young Geographer Working Group (YGWWG) of Asian Geographical Association (AGA) is established in 2019. The working team will develop a medium-term research agenda for the working group, which will serve as the guideline for working group events and for community members to share ideas and research findings. Specifically,

- 1) Develop and maintain connections and joint efforts with other AGA groups as well as other related GIScience and geographic academic organizations.
- 2) Organize special sessions and workshops in AGA conferences as well as otherGIScience, or geography conferences, in accordance with the research agenda.
- 3) Collaborate with commissions within AGA or other academic associations to organize joint workshops on topics of shared interest.



The website of AGA-YGWG is <http://www.aga-ygwg.com/>, and at current time around 160 members from over twenty countries and regions have joined in AGA-YGWG. Welcome all of you to join in the near future.



**Welcome to join us!**

## **The Working Committee for Young Geographers of Geographical Society of China (GSC-WCYG)**

The Working Committee for Young Geographers of Geographical Society of China (GSC-WCYG), established in 1986, is an academic organization affiliated to the Geographical Society of China. GSC-WCYG aims to build a platform for effective academic exchanges and academic activities for young geographers, and to serve the cultivation of young geographers and innovation in geography. We advocate good academic norms and academic ethics, consolidate the professional thinking of young geographers, and carry forward the scientific spirit of truth-seeking, innovation, collaboration, and dedication. We encourage cooperation and communication between different groups from different geographic regions to break the barriers of interdisciplinary research, which aims to solve complex global and regional-scale scientific problems. We also aim to represent the interests of young and early career geographers at the GSC-WCYG. The key point is to stimulate young geographers in GSC-WCYG activities. At the present, GSC-WCYG has more than 50 individual members, who are geographical workers from research institutes, colleges and universities, middle schools and governmental agencies from all over China. Since 1986, GSC-WCYG has hosted a total of 17 the National Academic Seminars for Young Geographic Workers in Beijing, Nanjing, Guangzhou, Changchun, Shanghai, Ningbo and other places. In addition, it has hosted the China-Japan-Korea Joint Conference on Geography, National Academic Debate Competition for Young Geographic Workers, Youth Geography Academic Salon, Youth Geography Column of Geography Journal, Youth Talent Support Project, etc.

## **The Young Scientist Innovation Network of International Society for Digital Earth (ISDE-YSIN)**

The Young Scientist Innovation Network (YSIN) of International Society for Digital Earth (ISDE) aims to promote the development of crucial concepts and innovative technologies of the Digital Earth and contribute the power of young scientists for the Sustainable Development, the Future Earth, and other significant scientific programs. The overall goal is to focus on serving innovation and development in the field of Digital Earth, unite young scientists and support their academic innovation, as well as organize international academic exchange seminars.

### The Mission of YSIN-ISDE

- 1) Develop and maintain connections and joint efforts with other ISDE groups as well as other related GIScience and geographic academic organizations.
- 2) Organize special sessions and workshops in ISDE conferences as well as other GIScience, or geography conferences, in accordance with the research agenda.
- 3) Develop ISDE education and empower young scientists to broaden their innovative thoughts.
- 4) Establish the ISDE Young Scientist Awards to recognize young scholars with outstanding contributions in the field of Digital Earth, to inspire young talents to pursue Digital Earth research.

## **Yuxi Normal University**

Yuxi Normal University is a full-time undergraduate-level university in Yunnan Province. In 1978 it was approved by the People's Government of Yunnan Province to establish the Yuxi Normal Diploma-level Training Class and expanded to Yuxi Normal Diploma-level College in 1983 with the approval of the provincial government. In 1992, the National Education Committee approved Yuxi Normal Advanced Diploma-level College. In 2000, Yuxi Normal University was established with the permission of the Ministry of Education. In 2007, the university passed the national appraisal for undergraduate level teaching from the Ministry of Education. In 2017, it achieved a good grade in the national appraisal for undergraduate level teaching from the Ministry of Education. In 2019 it was named a model university for cultivating application-oriented undergraduate talents in Yunnan Province.

Yuxi Normal University is located in one of the famous Top Ten Easygoing Livable and Environmentally Friendly Cities of Central Yunnan Province, Yuxi city. The University, which adheres to the spirit of the motto of truth, goodness, beauty and application, is based itself on Central Yunnan Province, takes a root in Yuxi, serves the greater Yunnan province and the nation itself while expanding itself into Southeast Asia. The cultivation of 65,000 talented students caters to local and regional educational and economic demands.

The university now has one Provincial University Class-B Discipline, five Provincial Key Cultivation Disciplines along with three authorized Master's Degree Disciplines. There are one key provincial laboratory, seven key provincial university construction laboratories, three provincial university engineering research centers, four key laboratories in Yuxi, one talent training model at the Provincial Experimental and Innovation Centre and four Yunnan provincial experimental teaching demonstration centers at the university. In addition, the university also embraces 23 scientific research institutions which are: Mekong Sub-region National Folk Culture Museum,

Endangered Languages Institute, Paleontology Institute, Research Center of Yuxi Economic and Social Development, Research Center for Pollution Control and Ecological Restoration.

Yuxi Normal University has 44 majors of which Fine Arts is a national-level specialty with Thai major being provincial-level key specialty, Geology, Biology and Visual Design being provincial-level specialty majors. Fine Arts, Physical Education, Mathematics and Applied Mathematics, Geography, and Physics passed the national second-level certification of teacher training majors. There are five provincial level teaching teams, nine exceptional provincial level courses, seven provincial level first-class courses, one model provincial level bilingual course, one provincial level experimental zone for the cultivation of legal talent in professional and practical law, two provincial level bases for experimental practice and training and technical skills service centres and finally four provincial level star educator studios and one first prize and three second prizes of Yunnan Provincial Teaching Achievement Award.

There are 15 teaching institutions, 13 Party committee Administrative management institutions, 17 subordinate institutions, and three Party committee organizations under the university. At present, the university has 13,785 full-time students and 830 teachers and staff. Among the full-time instructors, 89 of whom have senior titles, 236 of whom have associate senior titles, 227 of whom have a master's degree or above, 24 teachers from Xingdian Talent Support Program of Yunnan Province, 13 teachers from Two Types Talent Program of Yunnan Province, 4 provincial-level famous teachers, 82 people in the High-level Talent Introduction Plan in Yuxi City, 26 people in the High-level Talent Cultivation Support Program, and 29 middle-aged and young discipline technology leaders in Yuxi City.

In recent years, the university has undertaken 514 research projects at home and abroad, including 13 National Social Science Fund projects, 29 National Natural Science Fund projects, one international cooperation program, 159 provincial and ministerial projects, 224 prefect projects, and 110 horizontal projects. Teachers of the

university have published 231 academic monographs and textbooks, and published more than 2,500 academic papers including more than 330 core journals and more than 320 papers included in SCI, EI, CPCI, etc. A total of 47 academic research achievements have been awarded by provincial and municipal relevant departments, and 92 patents have been authorized by teachers.

Yuxi Normal University has taken the initiative to participate in and serve the construction of the Belt and Road Initiative Strategy and of South and South-east Asia center of Yunnan province and has always held the concept of globalization at its heart. While reinforcing the establishment of long-term and stable cooperative relationships with universities and schools of South and South-east Asia such as Thailand, Burma, Laos and other neighboring countries, the university has successively carried out various forms of joint education, from exchanges of teachers and students to scientific cooperation and academic and cultural exchanges with universities and colleges from the United States, Britain, Canada, Bulgaria, Japan, Singapore, South Korea and other countries. Yuxi Normal University has set up 30 internship bases abroad and 3 Chinese Language and Culture Centers overseas. At the same time, the university also serves as the first Chinese language and culture education base for the Yunnan Province as well as a test site for the Chinese language proficiency exam otherwise known as HSK.

Yuxi Normal University fully implements the fundamental task of cultivating students' morality and continues to accelerate its transformation and development to build a first-class local application-oriented university.

## **The IGU Commission for Young and Early Careers Geographers (IGU-YECG)**

The IGU Young and Early Career Geographers' Taskforce (IGU-YECG) was launched on 22 August 2016 at the International Geographical Congress in Beijing, China. The Taskforce is currently composed of five members, and has representation from Asia, Europe, South America and Africa. The taskforce aims to promote career development for early career geographers, stimulate international and inter-generational research conversations between geographers, and elevate the achievements of early career geographers around the world.

The YECG Taskforce has five strategic areas of work. These include:

- 1) Hosting training and networking events at relevant platforms, for example, IGU annual conferences and other international geography conferences.
- 2) Provide opportunities for early career participation through paper and poster competitions, field visits, summer/winter schools.
- 3) Building publicity for the achievements of individuals who have made a novel/high impact and contribution (i.e., through awards for the best PhD)
- 4) Creating feedback channels to strongly raise issues/problems faced by young and early career researchers in different parts of the world. This is done through building connections with other IGU commissions and other early career initiatives around the world
- 5) Developing online resources and a platform by setting up email list, member and mentor database, jobs database, social media, webpage

The IGU-YECG has pioneered “Young and Early Career Scholar Awards” at IGU Conferences, organized paper and poster sessions at every IGU event since its inception, published a Special Issue on “Geospatially and Sustainable Development Goals” in the *Journal of Geography, Environment and Sustainability* (official journal of Russian Geographical Society) with contributions from early career researchers, and recently

initiated a Working Group on ‘Geography and Sustainability’ in collaboration with IGU Commission on Geography for Future Earth and the Journal of Geography and Sustainability. Geography is a discipline that brings together researchers and holds the keys to understanding our planet and tackling some of the critical environmental, developmental, and social challenges we face today. IGU-YECG is committed to empowering and nurturing future leaders in geography by working together with academic mentors, early career scholars and groups who similarly recognize the importance of geography. If you are interested in IGU-YECG future activities, please subscribe to mailing list and become a member. For more information, please see IGU-YECG website at <https://igu.younggeographers.org/>.



**Welcome to join us!**



## Organizers

### ❑ Organizers

Young Geographer Working Group of Asian Geographical Association (AGA-YGGWG)

Working Committee for Young Geographer of the Geographical Society of China (GSC-WCYG)

Young Scientist Innovation Network of the International Society for Digital Earth (ISDE-YSIN)

### ❑ Co-organizer

Yuxi Normal University

### ❑ Supporter

IGU Commission for Young and Early Career Geographers (IGU-YECG)

## Academic Committee

### □ Chair

Prof. Dahe Qin Chinese Academy of Sciences, China

### □ Members

Prof. Kanat Baigarin	Nazarbayev University, Kazakhstan
Prof. Lai Vinh Cam	Vietnam Academy of Science and Technology, Vietnam
Prof. Fahu Chen	Chinese Academy of Sciences, China
Prof. Ahmet Ertek	Istanbul University, Turkey
Prof. Bojie Fu	Chinese Academy of Sciences, China
Prof. Chul Sue Hwang	Kyung Hee University, Republic of Korea
Prof. Guonian Lv	Nanjing Normal University
Prof. Michael Meadows	University of Cape Town, South Africa
Prof. Yuji Murayama	University of Tsukuba, Japan
Prof. Suresh Chand Rai	University of Delhi, India
Prof. Changlin Wang	Chinese Academy of Sciences, China
Prof. Juhua Xiong	National Natural Science Foundation of China
Prof. Guoyou Zhang	Chinese Academy of Sciences, China
Prof. Chenghu Zhou	Chinese Academy of Sciences, China

## Organizing Committee

### ❑ Chairs

Prof. Min Chen	Nanjing Normal University, China
Prof. Erfu Dai	Chinese Academy of Sciences, China
Prof. Dejiang Liu	Yuxi Normal University, China

### ❑ Co-Chairs

Ms. Xuanzi Zhang	Asian Geographical Association
Prof. Li He	Xi'an Jiaotong University, China
Prof. Falyu Qin	Yuxi Normal University, China
Prof. Jiangbo Gao	Chinese Academy of Sciences, China
Dr. Zhen Liu	Chinese Academy of Sciences, China
Dr. Gaurav Sikka	Lalit Narayan Mithila University, India

### ❑ Members

Dr. Vu Thi Bac	Vietnam National University Ho Chi Minh City, Vietnam
Prof. Suh-hee Choi	Kyung Hee University, Republic of Korea
Prof. Debajit Datta	Jadavpur University, India
Prof. Xing Huang	South China University of Technology, China
Dr. Ömer Emre Kuşçu	Istanbul University, Turkey
Ms. Chenyan Li	Geographical Society of China, China
Prof. Gang Li	Northwest University, China
Prof. Wei Luo	National University of Singapore, Singapore
Dr. Dhritiraj Sengupta	East China Normal University, China
Dr. Gulomjon Umirzakov	National University of Uzbekistan, Uzbekistan
Prof. Hao Wu	Central China Normal University, China
Prof. Li Wu	Yuxi Normal University, China
Prof. Zhuo Wu	Guangzhou University, China

## Contact Us

### ❑ Program Coordinator

Prof. Min Chen      chenmin0902@163.com

Prof. Li He          lihegeo@xjtu.edu.cn

Prof. Falyu Qin      qinfl@yxnu.edu.cn (workshop consulting)

### ❑ Conference Secretariat

Ms. Xuanzi Zhang    acg2018@igsnr.ac.cn

Dr. Kai Zhang        zhangk2g@163.com

## Volunteers

Zhuo Sun	+86 15623276900	zsun@nnu.edu.cn
Guoxi He	+86 15528203205	hgx000318@163.com
Ruoxi Li	+86 17791695997	1115797531@qq.com
Yang Zhang	+86 13936257577	18800454789@163.com
Jiali Feng	+86 18093639402	fengjiali2021@163.com
Rong Wang	+86 13013189552	NancyWangR@163.com
Lingfeng He	+86 15359893184	helingfeng@stu.xjtu.edu.cn